



(1491-1544) ALA
 Alardus Amstelredamus
 Belgian Theologian & Philosopher
 Costume - 1500s - Belgian
 N. Y. PUBLIC LIBRARY
 ASTOR LENOX TILDEN FOUNDATION

326



#16 (1860)
Artisan's wife
Bohemia, 16th cen.

Costume - 1500, (Gen.)

N. Y. PUBLIC LIBRARY
PICTURE COLLECTION



A. Bianchini inv.

COSTUME



N. Y. PUBLIC LIBRARY
PICTURE COLLECTION

E. Mesplès del.

N. Y. PUBLIC LIBRARY
ASTOR LENOX TILDEN FOUNDATION



Kornhauer Hutte.

Böhmischer Edelmann.

2045
Feldman



Polnische Edelleute in Kosttracht.

Sharing Screenshot
A link to your screenshot has been copied to your clipboard (click to view).



324



LIBRARY OF THE
MUSEUM OF FINE ARTS

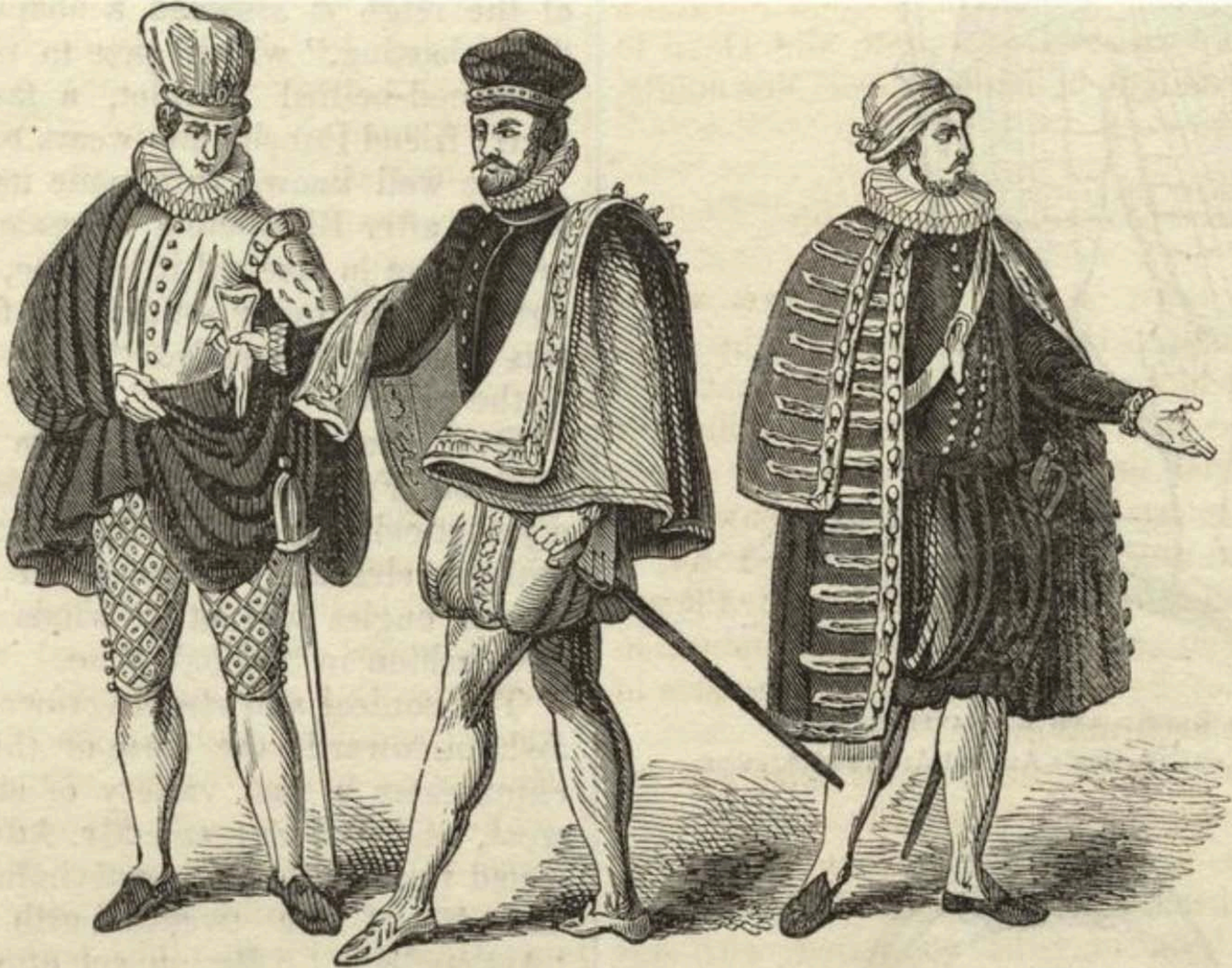
Gift of the
Museum of Fine Arts

33

Costume. - 1500s



COSTUME.—French, 1574 (Montfaucon). . . . German, 1577 (Weigel). . . . Burgundian, 1577 (Weigel).



COSTUME.—Venetian, 1590 (Titian). . . . Spanish, 1577 (Weigel). . . . French, 1581 (Boissard).



ST. JOHN'S LIBRARY
HISTORICAL COLLECTION

YES & BARRET. SC.

COSTUME DU XVII^e SIÈCLE, D'APRÈS PAUL VÉRONÈSE.

115



* 16 (1860)
Croatian man
16th cen.

Costume - 1500s (am.)

N. Y. PUBLIC LIBRARY
ASTOR LENOX TILDEN COLLECTION



DAME NOBLE 1500-1510

D'APRÈS UNE TAPISSERIE DU TEMPS — MUSÉE DE CLUNY

1511



DAME NOBLE
DE
VENISE
1540 - 50
TABLEAU DE TITIEN.
GALERIE DU BELVEDÈRE
À VIENNE.
Dessin inédit de J. Lasso.

J. Lasso

417.291



J. J. J.

65.

OFF. DELAURE 1912

DAMES NOBLES . 1510 - 1520 .

D'APRÈS UNE TAPISSERIE DU TEMPS . — MUSEE DE CLUNY .

• 1519



Don Carlos, Infant von Spanien.

Geb. 3. Juli 1545, gest. 24. Juli 1568.

* 12,340 (1874/76)
Don Carlos, Duke of Spain
1545-1568

Blätter für Kostümkunde.

Neue Folge. — 33. Blatt.

Verlag von Franz Lipperheide in Berlin.

Costume - 1545 - Spanish



DON GIOVANNI d'Austria figlio naturale di Carlo V. generato con una Dama Fiamenga detta la Plombes, di passare ne' Paesi Bassi al governo di queste Provincie in luogo del Requesens defunto, il quale premuto dal bisogno d'affrettar tal viaggio al più tosto, se ne passò incognito per la strada di Francia con le poste, con sei sole



Jean Salses

Don Juan d'Austria
c 1578

Don Juan d'Austria.

W. & A. PUBLISHERS
15, N. BROADWAY
NEW YORK



248



16 (1860)
Dutch nobleman
16th cen.

Costume - 1500₂ - Dutch

N. Y. PUBLIC LIBRARY
PICTURE COLLECTION



EDAD MODERNA. - HUNGAROS, CROATAS, DÁLMATAS Y CHECOS DEL SIGLO XVI

14, 570 (1894) vol 2

Costume - 1500s



EDAD MODERNA.-POLACOS DEL SIGLO XVI

14,5706894 vol 2

Costume - 1500s - Polish.



EDAD MODERNA.—TRAJES DE LOS ESPAÑOLES Y PORTUGUESES DEL SIGLO XVI

14.570 C.1896) v.2

Costume - 1500s - Spanish



EDAD MODERNA.—TRAJES DE LOS ESPAÑOLES Y PORTUGUESES
EN LA SEGUNDA MITAD DEL SIGLO XVI

Costume - 1500s - Spanish
#14,570 (1894) vol 2



EUROPE XVI^E SIECLE

EUROPA XVITH CENT^Y

EUROPA XVI^{TES} JAHR^T



IMP. FIRMIN DIDOT et. C^{OP} PARIS.

Vallet Inth



FIN DE LA EDAD MEDIA.—TRAJES DE LOS ESCANDINAVOS DEL SIGLO XVI

4.14, 5.12 (1894) v. 2

Costume - 1500s



MUSEUM OF CASTEL-BERT

The Burchard in

E. Mepples del.
155

COSTUME 1500s - Flemish



244



#16 (1860)
Flanders
16th cen.

Costume - 1500_s - Flemish

N. Y. PUBLIC LIBRARY
ASTOR LENOX T. D.
TILDEN COLLECTION

245



Costume - 1500s - Flemish

N. Y. PUBLIC LIBRARY
PICTURE COLLECTION



16c 33

Costume - 1500s - Flemish

N. Y. PUBLIC LIBRARY
PICTURE COLLECTION

N. Y. PUBLIC LIBRARY
PICTURE COLLECTION



COSTUME.—French, 1574 (Montfaucon).—German, 1577 (Weigel).—Burgundian, 1577 (Weigel).



COSTUME.—Venetian, 1590 (Titian).—Spanish, 1577 (Weigel).—French, 1581 (Boissard).

Costume—1500s (General)

#1208



*From the Frontispiece to the Great Bible
said to have been designed by Hans Holbein.*

A.D. 1539

Costume - 1500s (Giv.)

5237



1643.—General Costume of the time of Edward VI.

(Selected from the Ancient Pictures of his Coronation Procession from the Tower to Westminster.)



1644.—Costume.—French, 1574 (Montfaucon). German, 1577 (Weigel). Burgundian, 1577 (Weigel).

H. Y. TUCKER LIBRARY
EXHIBIT COLLECTION



Vierne del

301 Imp. Firmin Didot C^o Paris

H. V. PUBLIC LIBR.
PICTURE COLLECTION

DT

Costume - 1500s - Flemish

EUROPE. 16TH CENTURY

- 1 German count.
- 2 A kettle-drummer.
- 3 A Flemish nobleman.
- 4 Young Flemish nobleman.
- 5 Flemish nobleman.
- 6 Young Flemish lady.

421



* 16 (1860)
Girl of Ragusa, Dalmatia
16th cen.

Costume - 1500s (Gen.)

N. Y. PUBLIC LIBRARY
PICTURE COLLECTION

402



Erlichman

16 (1860)
Greek merchant
16 H. Cami (B.)

Costume - 1500s (Gen.)

N. Y. HIST. SOC.
PICTURE COLLECTION

401



16 (1860)
Greek noblesman
16th Cent. (?)

Costume - 1500s (Gen.)

N. Y. PUBLIC LIBRARY
PICTURE COLLECTION



476



16 (1860)
Greek woman in Syria
16th Cen.

N. Y. PUBLIC LIBRARY
PICTURE COLLECTION



H

38

CURIA

ARABIAN LADY

W. G. ...



#16 (1860)
 Hungarian noble
 15H - 16W cm.

N. Y. PUBLIC LIBRARY
 PICTURE COLLECTION

Costume - 1500g (6m.)



Irish Men and Women in the reign of Elizabeth

British Museum, Add. MS. 28330

Costume - 1500s - Irish #6356 (21903)

N. Y. PUBLIC LIBRARY
PICTURE COLLECTION



Engraved by H. Robinson.

JAMES STUART, EARL OF MURRAY.

(REGENT OF SCOTLAND.)

OR, 1570.

FROM THE ORIGINAL, IN THE COLLECTION AT

HOLYROOD PALACE, EDINBURGH.

London, Published March 2, 1826, by Harding & Leprieux, Pall Mall East.

1534 - 1570

Costume - 1500s - scottish

Portrait of Johanna of Austria

1407



*Johanna d'Autriche
Reine de Portugal 1495*

Portrait by ...

Portrait by ...

Johanna (of Austria), 1537-1578
= Regent of Spain
wife of Prince Juan of Portugal
(son of Emperor Karl V.)

Costume - 1500s - Spanish



LADIES OF THE SIXTEENTH CENTURY.

the jupe was wide and flowing. After the arrival in France of Catharine de Medicis, the most extravagant exaggerations were introduced into every part of the dress. Amongst the most remarkable of these was the wide-flowing gown, stiffly formed, called the *vertugalle*. Some of the jokers of the time

29752

Costume - 1500s (General)



16 (1860)
 Lady from Moscow
 m. d.

Costume - 1500s - Russian



A LADY IN FULL DRESS.

remarked that all the ridiculous fashions which have been witnessed from the seventeenth century to the present day are found under other names in the costume of the ladies of the sixteenth century.

Our next cut is taken from a portrait in the Library of St. Geneviève, in Paris. The lady it represents was the daughter of Jacques de Beaune,

9756

Costume - 1500s (General)



325

Costume-1500, (Gen.)
#16 (1860)
Lady of Bohemia
16th Cen.

N. Y. PUBLIC LIBRARY
PICTURE COLLECTION



16 (1860)
Lady of Persia
16th Cen (P.)

Costume - 1500, (Semi-real)

ROYAL PUBLIC LIBRARY
PICTURE COLLECTION



LVDOVICVS REQVESEN. MAG. COMEN. REG. CAST. RE. M. CON. GVB. ET CAP. GENERAL.

Costume - 1570s - Spanish

N. Y. PUBLIC LIBRARY
PICTURE COLLECTION



459

516 (1860)
Man from Georgia
16th cen.
Russia.

N. Y. PUBLIC LIBRARY
PICTURE COLLECTION



#16

Ant. Veselica

Croatia, 1500s.

H. Y. PHILLIPS AND SON LTD LONDON
PICTURES COLLECTION

272



Cost. - Spanish, 1870-1879

Gyona 33



THE
PUBLISHERS
AND
PRINTERS





UN MARIAGE VÉNITIEN AU XVI^e SIÈCLE

« Hic Antenorei Connubia Magna Patricios que vides Cætus, Venetos que hymenæos. »

(Henricus Goltzius, Sculptor, 1594. — Theodorus Bernardus Amsterodanus, Inventor. — Communiqué par le British Museum.)

Costume. 1500s. Venetian

M. Y. BUREAU VÉTÉRINAIRE
FACULTÉ VÉTÉRINAIRE

410



#16.

A married woman
of Thessalonica, 1500.
Now Thessalonika, West Central Macedonia, Greece.

PUBLIC LIBRARY
PICTURE COLLECTION
N. Y. PUBLIC LIBRARY

WICTORIUM COLLECTION

278



FIG (1860)
Matron
Galicia, Spain

Costume - 1500₂ - Spanish

N. Y. PUBLIC LIBRARY
PICTURE COLLECTION



Fig 16 (1860)
 Matron
 Holland, 16th Cen.
 Costume - 1500s - Dutch



162

#16 (1860)
MATRON, Persia
16th cen. (?)

Costume - 1500c (General)

N. Y. PUBLIC LIBRARY
PICTURE COLLECTION

270,



Fig (1860)
Matron
Portugal

Costume - 1500₃ (Gen.)

NY PUBLIC LIBRARY
PICTURE COLLECTION

334



16 (1860)
Merchant
Netherlands

Costume - 1500s - Dutch

N. Y. PUBLIC LIBRARY
PICTURE COLLECTION



W. V. F. PUBLIC LIBRARY
VICTORIAN COLLECTION

Herausgegeben von I. Schreiber
COSTUME - 1500s - Dutch

Berlin bei Wiedemann & Sohn

Niederländische Tracht.

Ende des XVI Jahrhunderts.

449



anale lady Karamania

33

Costume - 1500s (Gend)

Asia Mi

N. Y. PUBLIC LIBRARY
PICTURE COLLECTION

266



*16 (1860)
Noble matron
Spain

Costume - 1500 - Spanish

N. Y. PUBLIC LIBRARY
PICTURE COLLECTION



16 (1860)
A noble Slav
Dalmatia, 15th-16th cen.

Costume - 1500s (Gen.)



Noble Vénitien (habit d'hiver). xvi^e Siècle.



Seigneur de la Nuit au criminel. xvi^e Siècle.

et nombre d'autres, qui jettent un jour nouveau sur les mœurs, les coutumes, les costumes de la Venise de la Renaissance, et font pour ainsi dire revivre Venise à nos yeux.



Femme mariée, Costume de maison. xvi^e Siècle.



Femme veuve. Giacomo Franco, xvi^e Siècle.

Ce sont surtout les recueils de *Pietro Bertelli* et de *Giacomo Franco* qui ont servi à illustrer le présent chapitre. Nous avons emprunté à Franco la *Dogaressa et ses Dames*

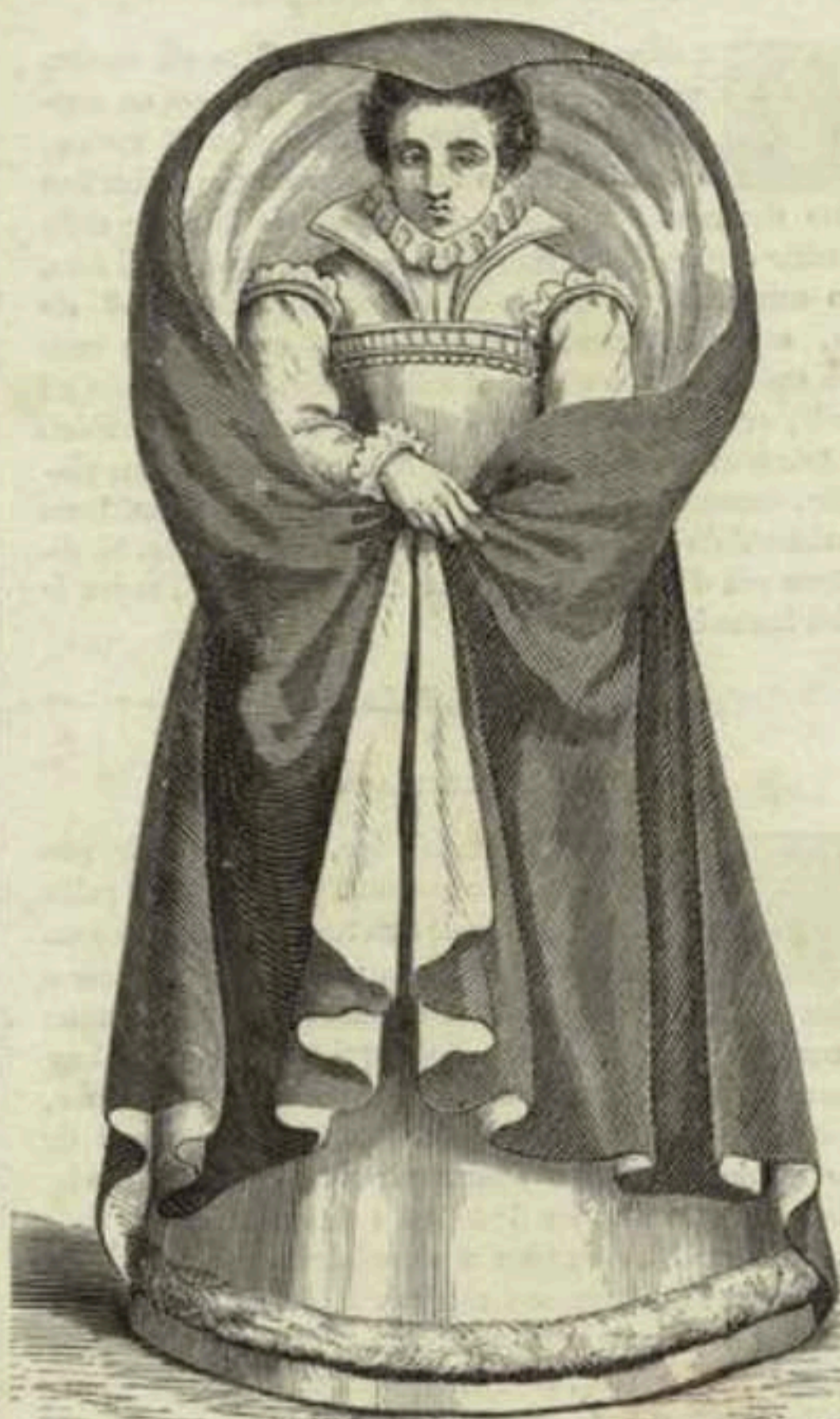


327

#16 (1860)
Nobleman
Switzerland

Costume - 1500s - Swiss

N. Y. PUBLIC LIBRARY
PICTURE COLLECTION



16 (1260)
Noblewoman
Flanders, 16th cen.

Costume - 1500_s - Flemish



16 (1860)
NORWAY, 15th cen.

Costume - 1500s (Gen.)

NY PUBLIC LIBRARY
PICTURE COLLECTION



466

* 16 (1860)
Persian maiden
16th cen. (?)

Costume - 1500s

N. Y. PUBLIC LIBRARY
PICTURE COLLECTION



465

16 (1860)
Persian maiden
16th cen. (?)

Costume - 1500c (General)

N. Y. PUBLIC LIBRARY
PICTURE COLLECTION



467



* 16 (1860)
Persian matron
16th cen. (?)
Costume - 1500₃ (General)

NY PUBLIC LIBRARY
PICTURE COLLECTION



SUISSE.

XVI. S. 2^{me} moitié.

PERSONNAGE BALOIS.

COLL. AUC. DE FOURTALES.

CASQUE DU CHEV. W. FRÖLICH, 1562.

(ARSENAL DE SOLEURE.)

BOUCLIER 1564.

PAR J. AMMAN.

355



№ 16 (1860)
Poland, 16th cen.
Costume-1500₅-Polish



PERSONNAGES VENITIENS. 1508.
PEINTURES MURALES DE TITIEN,
A LA SCUOLA DE S. ANTOINE A PADOUE.
DESSINS INEDITS.

Jacquemin

Imp. Delat

353



#16 (1860)
Polish noble

Costume - 1500s - Polish

N. Y. PUBLIC LIBRARY
PICTURE COLLECTION



Polnische Dame und Edelmann in Nationaltracht
Costume - 1500s - Polish

#2345 (1848)
Polnisch, 1870



Lanzenträger.

Panzerritter.



Polnische Dame und Edelmann in Nationaltracht.

23175
PICTURE COLLECTION

275



* 16 (1860)
Portugal, 16th cen.

Costume - 1500, (Gen.)

N. Y. PUBLIC LIBRARY
PICTURE COLLECTION



3585



3586

APT 1277
Flemish, 1500s

Personnages principaux à la grande tapisserie représentant le mariage de Béatrix. Les hérauts, fig. 3584, occupent une tribune et sonnent de la trompette.

Hauptpersonen einer großen Tapissere, welche die Hochzeit von Beatrix vorstellen. Die Heralde, fig. 3584, besetzen die Tribüne und blasen die Trompeten.

Principal personages figuring in the large tapestry representing the marriage of Beatrix. The heralds fig. 3584 stand in a gallery blowing trumpets.

N. Y. PUBLIC LIBRARY
PICTURE COLLECTION



PRINCIPIO DE LA EDAD MODERNA.—TRAJES DE LOS PAÍSES-BAJOS (1480-1580)

#14,570 (1894) vol 2

Costume- 1500s- Dutch



1. Russian Merchant. 2. 3. Russian Grandees. 4. 5. People of Strelitz. 6. 7. 13. Hungarian Chiefs. 8. 15. Hungarian Princes. 9. Polish Grandee. 10. Russian Warrior. 11. King of Poland. 12. Polish Chief. 14. 16. Hungarian Warriors.



16 (1860)
 Russian (?) matron
 16th cen.

Costume-1500₂-Russian

N. Y. PUBLIC LIBRARY
 PICTURE COLLECTION



RUSSIAN HOSPITALITY DURING THE TIME OF IVAN THE TERRIBLE. (FROM A PAINTING BY SCHWARTZ.)

Costume - 1500's - Russian

wid.

ROBERTSON COLLECTION

NEW YORK PUBLIC LIBRARY

N. Y. PUBLIC LIBRARY

FRANCE

XVII^e SIÈCLE



F. Sarté et A. Rouvenet del. et sculp.

Imp. par Pasquet Mouge à Paris

SALTIMBANQUE et BOHÉMIENNE

no. 44. Lavall. B. 1 de Paris

Costume - 1500e (Gen.)

12.522 (IRSE)
1670

418



Plt

#16 (1860)
Slavic woman
Dalmatia, 15th-16th Cen.

Costume - 1500s (Gen.)

N. Y. PUBLIC LIBRARY
PICTURE COLLECTION



A SPANIARD IN THE SIXTEENTH CENTURY.

#148 (1906)

Costume - 1500s - Spanish

N. Y. PUBLIC LIBRARY
PICTURE COLLECTION



263



#16 (1860)
Spanish lady
16th cen.

Costume - 1500s - Spanish

N. Y. PUBLIC LIBRARY
PICTURE COLLECTION

263



#16 (1860)
Spanish lady
16th Cen.

Costume - 1500s - Spanish

N. Y. PUBLIC LIBRARY
PICTURE COLLECTION

277



FIG (1860)
Galicia, Spain

Costume - 1500s - Spain

270



FIG. 16 (1860)
NAVARRE, 16th Cen.

Costume - 1500s - Spanish



F 16 (1500)
Spanish nobleman

Costume - 1500 - Spanish

N. Y. PUBLIC LIBRARY
ASTOR LENOX TILDEN COLLECTION

280



* 16 (1860)
Navarre, 16th cen.

Costume - 1500s - Spanish

N. Y. PUBLIC LIBRARY
PICTURE COLLECTION



16 (1860)
Santander, Spain
10th Cen.

Costume - 1500, - Spanish



Swissesse . 1530 - 40 .

Allemande . 1560 - 80 .

292



16 (1860)

Costume - 1500s - Swedish

N. Y. PUBLIC LIBRARY
PICTURE COLLECTION

291



16 (1860)
Gotland, 16th cen.

Costume-1500_s-Swedish

N. Y. PUBLIC LIBRARY
PICTURE COLLECTION

328



16 (1860)
Swiss girl
16th cen.

Costume - 1500_s - Swiss

N. Y. PUBLIC LIBRARY
PICTURE COLLECTION

329



16 (1860)
Swiss matron
16th Cen.

Costume-1500s-Swiss

N. Y. PUBLIC LIBRARY
PICTURE COLLECTION

473



* 16 (1860)
Syrian girl
16 H. Cen.

H. T. PUBLIC LIBRARY
PICTURE COLLECTION

475



16 (1860)
Syrian matron
16" H. Col.

474



16 (1860)
Syrian matron
16th Cen.

N. Y. PUBLIC LIBRARY
PICTURE CO.

267



* 16 (1860)
Toledo, Spain
Regional costume, 16th cen.



470

*16 (1860)
Teipoli, Ottoman Empire
16th Cen.

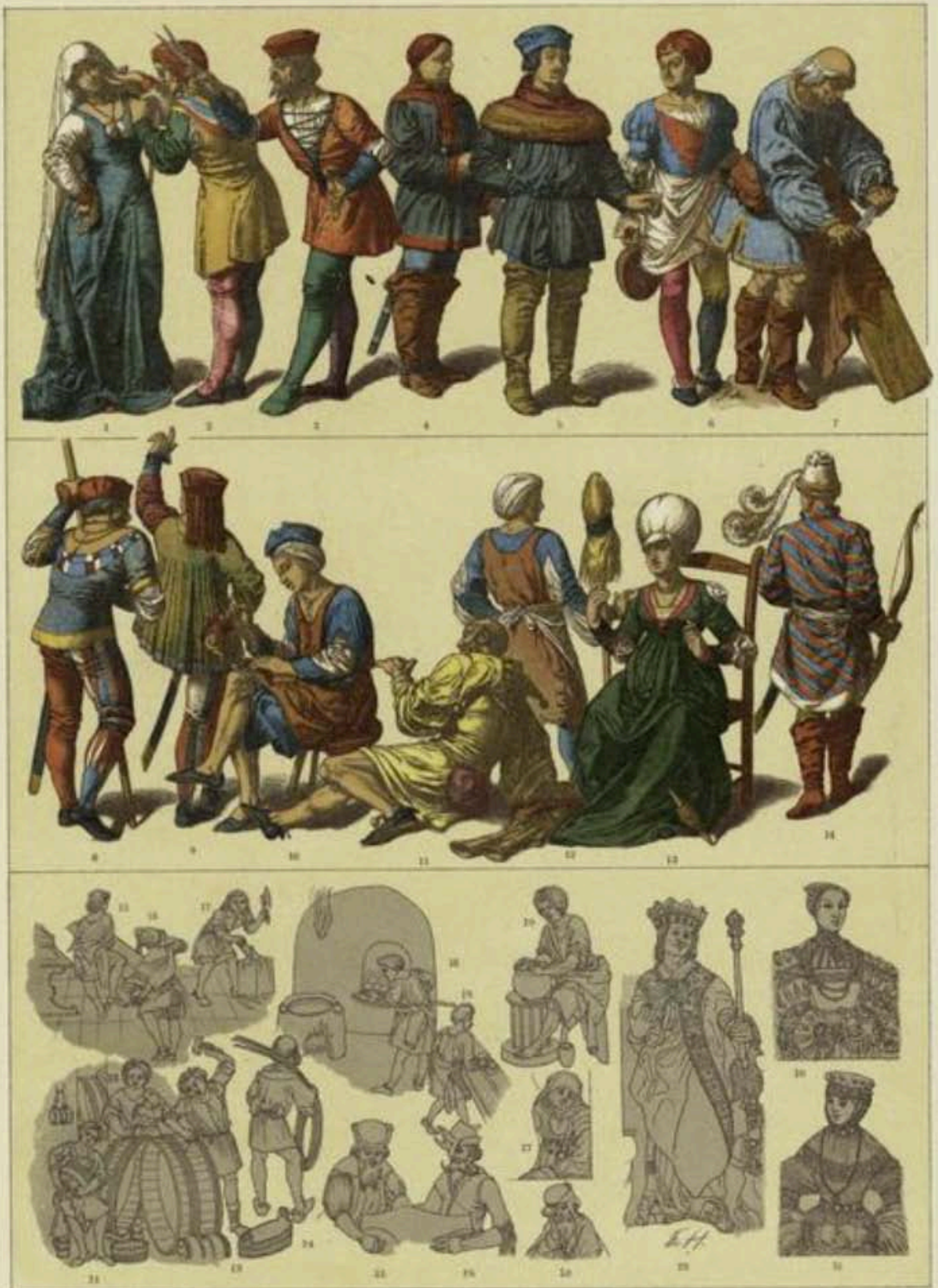
R. Y. PUBLIC LIBRARY
PICTURE COLLECTION



TRÁNSITO DE LA EDAD MEDIA Á LA MODERNA.—TRAJES DE LOS SUIZOS Á FINES DEL SIGLO XV Y PRIMERA MITAD DEL SIGLO XVI

11.14.3706894

Costume - 1500s - Swiss



TRÁNSITO DE LA EDAD MEDIA Á LA MODERNA.
 POLACOS (CRACOVIANOS) DE FINES DEL SIGLO XV Y PRINCIPIOS DEL XVI

Costume - 1500s - Polish

#14570C1874)1062



Venitienne .1580-85.

Parisienne .1580-90.



Vornehmer Russe.

Polscher Edelmann.

2545

✓ Costume - 1800s - Russian
Münchener Bilderbogen.

N. Y. PUBLIC LIBRARY
ASTOR LENOX TILDEN COLLECTION

Nr



1218

COSTUME

CXIX. Venetia

Ein Weib auß dem fürnembsien Adel zu Venedig.

Ein herrlich Weib vom Adel/
Seht also her ohn tadel.

Wol in der Stadt Venedig/
Wie die Figur bringt mit sich.

Gg iii



#16 (1860)
 Woman of Ceres (Cherco)
 Yugoslavia
 Costume ca. 15th-16th cen.
 Ceres Island in Veliki Kvarner,
 the Gulf of Zadar, Croatia.

411



Fig (1860)
Island of Lesbos
16th cen.

Costume - 1500s (Gen.)

N. Y. PUBLIC LIBRARY
PICTURE COLLECTION

450



woman, Karmania.

Asia Minor 33

451



אברהם בן פאולוס מלכות ארמניה

33

THE UNIVERSITY OF CHICAGO
EXETER COLLECTION

Costume - 1500s (Gen)

Asia Minor



T. PUBLIC LIBRARY
UNIVERSITY COLLEGE

358



16 (1866)
Lithuania
16th cen.

Costume - 1500₃ (Gen.)

N. Y. PUBLIC LIBRARY
PICTURE COLLECTION



THE MUSEUM OF THE
LONDON MUSEUM

265



#16 (1860)
Young girl
Spain, 16th cen.

Costume - 1500, - Spanish

N. Y. PUBLIC LIBRARY
PICTURE COLLECTION



#16 (1860)
Young girl
Spain, 18th cen.
Costume 1500₃ - Spanish



331.—Navarre, Sixteenth Century.

#12,499

Catherine Duchesse de Bar Sœur d'Henri IV.





COSTUMES OF BURGHER-WOMEN AND A COUNTRY-WOMAN.
In the time of the "Merry Wives of Windsor."

448 MS. Add. 28330. NEW YORK PUBLIC LIBRARY

Costume-1500s-English

PICTURE COLLECTION



Earl of Southampton.

THE PUBLIC DOMAIN 35
PUBLISHED BY THE NATIONAL ARCHIVES



Dresses of the 16.th Century.

5237

Painting Lord Hastings' Chapel Windsor



Earl of Southampton.

35



EDAD MODERNA.—TRAJES DE LOS INGLESSES EN LA SEGUNDA MITAD DEL SIGLO XVI

#14,570 (1994) v.2

Costume-1500s-English



Engraved by J. Child

EDWARD COURTENAY, EARL OF DEVONSHIRE.

OB. 1550.

HIS GRACE, THE DUK OF BEDFORD.

WILLIAM WOODWARD, LONDON, & JOHN GALT, EDINBURGH.

(1829 - 1856)

Costume - 1500s - English

T. 6

& R. 80

c/1835-1840.

Case X.



ELIZABETH. 1559.

Print 1559. Brit. Mus.
*1548.

Costume - 1559 - English



Elizabeth, Queen of England,

IN THE SUPERB DRESS IN WHICH SHE WENT TO ST PAULS.

London Published 1825, by W. R. Tiffin, 29, St. Martin's Lane.



ENGLAND—QUEEN ANNA BOLEYN—1536.

(*2nd Wife of Henry, 8th*)

Published by T. H. LACY, 89, Strand, London.

Costume - 1536 - English

285



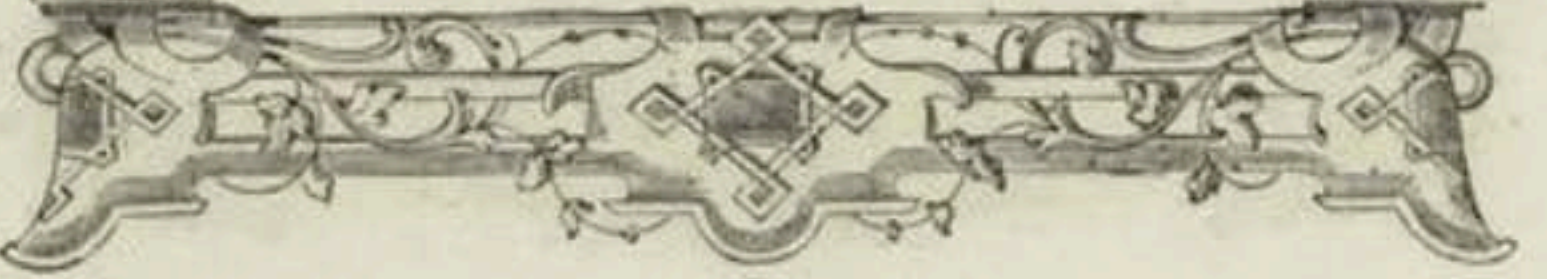
Fig 16 (1860)
English merchant

Costume 1500s - English

N. Y. PUBLIC LIBRARY
ASTOR LENOX TILDEN COLLECTION



284



16 (1260)
English youth

Costume - 1500s - English

N.Y. PUBLIC LIBRARY
PICTURE COLLECTION



Fashionable Habits of the 15th & 16th Centuries

5237

1 Roy 19 C viii

2,3. Harl. 4425

Cost. 15th & 16th Centuries



LES 1867

FEMALE COSTUMES IN THE TIME OF JAMES I.

Costume - 1500s - English

N. Y. PUBLIC LIBRARY
PICTURE COLLECTION



GENERAL COSTUME IN THE TIME OF HENRY VII. Selected from L'Imagination de la Vraye Noblesse, Royal MS. 19 C. viii.
and Roman de la Rose, Harl. MS. 4225.

819

819
N. Y. PUBLIC LIBRARY
PICTURE COLLECTION

Costume - 1500s - English



GENERAL COSTUME IN THE TIME OF HENRY VIII. Selected from Holbein's 'Dance of Death.'



GENERAL COSTUME IN THE TIME OF HENRY VIII. Selected from Holbein's 'Dance of Death.'



GENERAL COSTUME OF THE TIME OF EDWARD VI.

Selected from the Ancient Picture of his Coronation Procession from the Tower to Westminster.



9284

General Costume of the time of Edward VI.

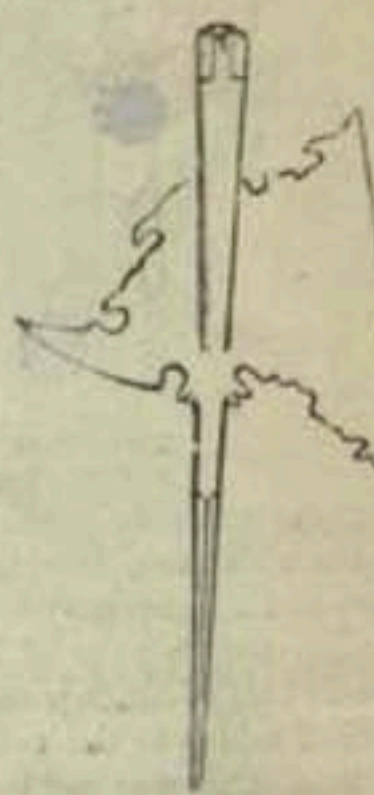
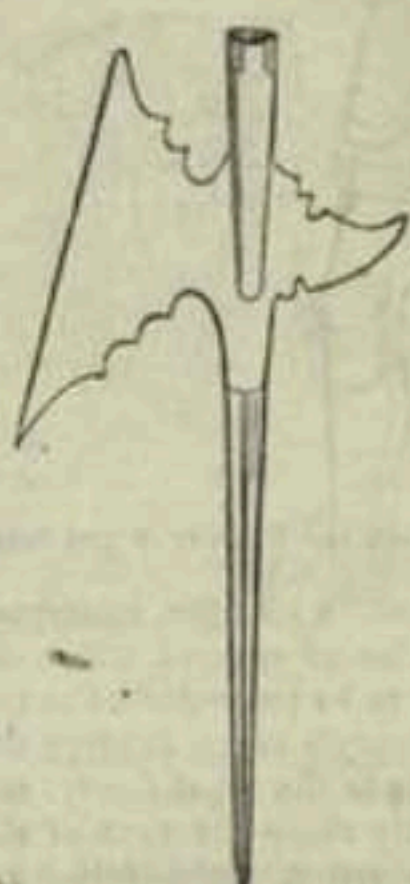
Costume - 1500s - English

N.Y. PUBLIC LIBRARY
PICTURE COLLECTION



George Earl of CUMBERLAND Knight of the Garter and Privy Counsellor to Queen ELIZABETH famous for Five Voyages he made at his own Charge the first in 1587 was to FLUYSE against the Duke of PARMA; the second in 1591 against the SPANISH Armada wherein he did great service; his third to the Isles of TERREIRA and AZORES where he took the first VIALSA his fourth to the Coast of SPAIN his last to St JOHN DE PORTA RICO where he won the Town with great Honour and returned safe into ENGLAND, and lay buried with his Ancestors at SKIPTON in CRAVEN in YORKSHIRE.

Published by W. Richardson Castle Street Leicester Fields.



1.—GLAIVE-BLADE OF THE TIME OF HENRY VII.
2.—SWORD ENGRAVED BY ALBERT DURER BEFORE 1528.

3.—MILITARY COSTUME ENGRAVED ON THE ANNEKED SWORD.
4.—HALBERD-HEADS OF THE TIME OF HENRY VII.



GENERAL COSTUME IN THE TIME OF HENRY VIII. Selected from Holbein's "Dance of Death." PUBLIC LIBRARY

Costume - 1500s - English.

PICTURE COLLECTION
M. Y. PUBLIC LIBRARY
PICTURE COLLECTION



Heinrich VIII.

1509—1547.

Anna von Cleve

1525.



5 (1500)
1500, 1500

Kaufmann in London.

Kavalier
1550--1600

Lady
zum Hofe der Königin Elisabeth.



HENRY HOWARD, EARL OF SURREY

OR. 1547.

FROM THE ORIGINAL IN THE COLLECTION OF

HIS GRACE THE DUKE OF NORFOLK.

(1517/47)

JOHN TAYLOR & COMPANY, LONDON & NEW YORK

Costume - 1500s - English

N. Y. PUBLIC LIBRARY
PICTURE COLLECTION



HENRY VII. 1500.

Roman de la Rose
Hart Collection - Brit. Mus.
*18,416

Costume - 1500 - English



HENRY VIII, 1530.

Figure in a large subject-picture at Hampton Court.

*Holbein
15,416.

Costume - 1530 - English



Kaufmann in London.

Kavalier
1550—1600.

Lady

vom Hofe der Königin Elisabeth.

Costume 1500s - English



*Lady Mary Ramsey, Wife of Sir Tho. Ramsey,
from the Original Picture, in Christ-church Hospital.*

Published at Bristol the 1st of Jan^y 1796 by W. Richardson, Castle Street, Leicester Square.

Bristol

Costume - 1500s - English



LADY OF THE COURT—ABOUT—1570.

(Luther, in the Dame de Montsoreau)

Published by TH. LACY, 89 Strand, London

Costume - 1500s - English

N. Y. PUBLIC LIBRARY
PICTURE COLLECTION



288



35

STUMB

H. Y. PUBLIC LIBRARY
ASTOR LENOX TILDEN COLLECTION



Maria v. Schottland
1569.

Graf Douglas v. Angus
1570.

Eduard VI.
1550.

W. H. H. 1570
Engraving



1561
1560

Lord Darnley, Marquise von Dorset Königin Maria v. Schottland
Gemalt der Königin Maria v. Schottland
1566. 1564.



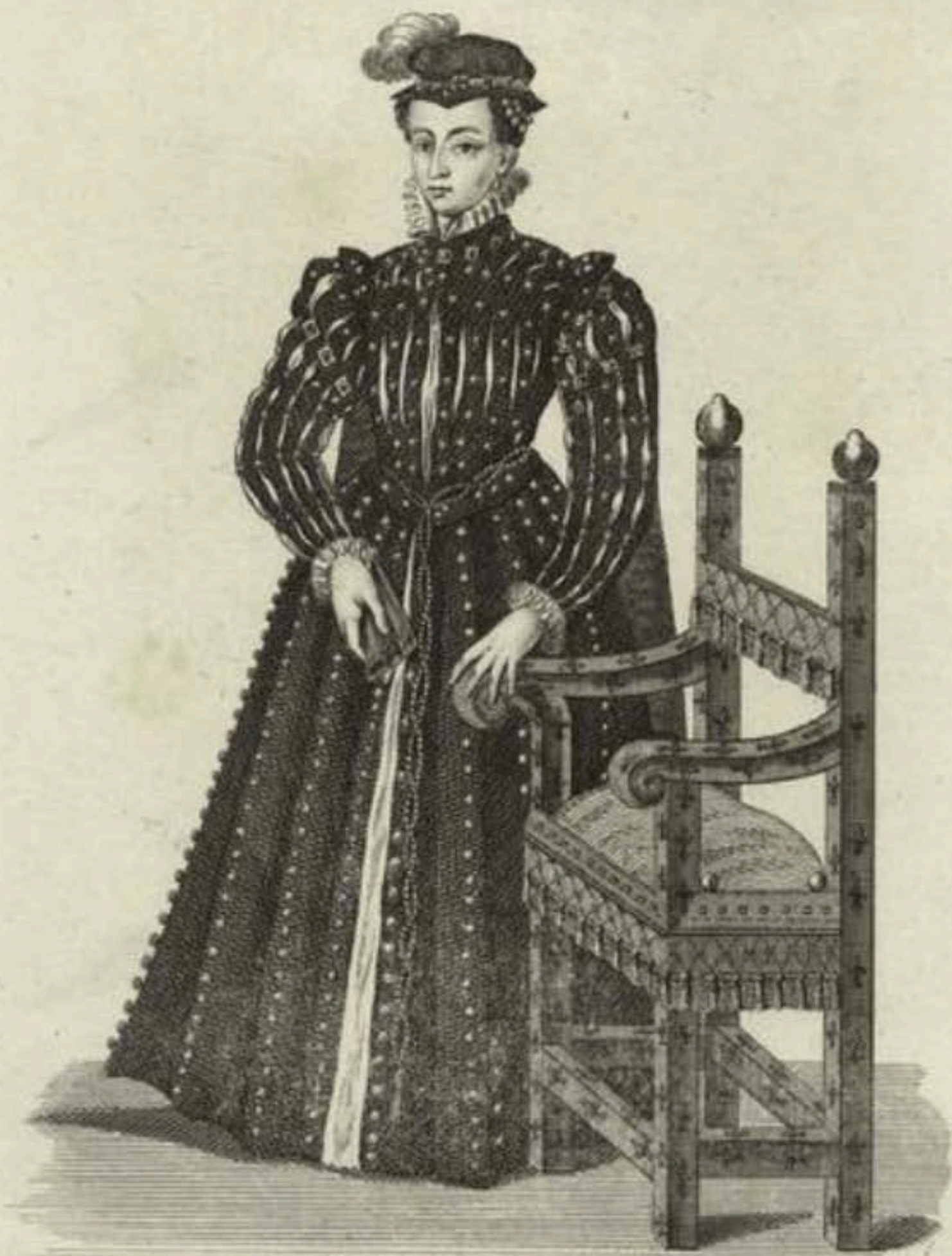
MARY QUEEN OF SCOTS. (Period, 1566.)

(*Born 1542.-Beheaded 1586*)

Published by T.H. LACY, 89, Strand, London.

Costume 45002 - English

THE METROPOLITAN MUSEUM OF ART
FREDERICK C. LINDSAY
PICTURE COLLECTION



Published by J. B. R. T. & Co. 11, St. Martin's Lane, London.

MARY.

from Montaigne.



MARY QUEEN OF SCOTS. (Period, 1566.)

(*Born 1542.-Beheaded 1586*)

Published by T.H. LACY, 89, Strand, London.

Costume 1500s - English

THE METROPOLITAN MUSEUM OF ART
PICTURE COLLECTION



181

16 (1860)
Nobleman
England

Costume - 1500₂ - English

N. Y. PUBLIC LIBRARY
PICTURE COLLECTION

282



16 (1860)
Noble woman
England, 16th cen.

Costume - 1500, - English

N. Y. PUBLIC LIBRARY
PICTURE COLLECTION

286



* 16 (1860)
Noble woman
England, 16th cen.

Costume - 1500s - English

N. Y. PUBLIC LIBRARY
PICTURE COLLECTION



1844.—Prince Henry and Lord Harrington. (From an old Picture at Earl Guildford's, Wroxton.)

#423

423
PUBLIC LIBRARY
COLLECTION

N. Y. PUBLIC LIBRARY
PICTURE COLLECTION

Costume of 16th Century - English



FIG. 343.—Queen Elizabeth, from the Penshurst portrait.

479

N. Y. PUBLIC LIBRARY
PICTURE COLLECTION

Costume - 1500s - English



363.—Reign of Edward VI.

#12,499 (1845-1847)

Costume-1500s-English

81

N. Y. PUBLIC LIBRARY
PICTURE COLLECTION



369.—Reign of Edward VI.
#12,499

Costume-1500s-English

N. Y. PUBLIC LIBRARY
PICTURE COLLECTION



375.—Reign of James I.



378.—Reign of James I.

Costume - 1500s - English

N. Y. PUBLIC LIBRARY
PICTURE COLLECTION
#12,479 (1845-1847)



Engraved by W. B. Stone

ROBERT DEVEREUX, EARL OF ESSEX.

OB. 1609.

FROM THE ORIGINAL OF HILLIARD IN THE COLLECTION OF
THE RIGHT HON^{OR} THE EARL OF VERULAM.

JOHN TAYLOR & COMPANY, LONDON & NEW YORK.

Costume - 1500s - English

N. Y. PUBLIC LIBRARY
PICTURE COLLECTION



Engraved by G. Kneller

SIR NICHOLAS BACON

OB. 1579.

FROM THE ORIGINAL OF ZUCCHERO, IN THE COLLECTION OF

HIS GRACE THE DUKE OF BEDFORD.

JOHN JOYNS & COMPANY, LONDON & NEW YORK.

N. Y. PUBLIC LIBRARY
PICTURE COLLECTION

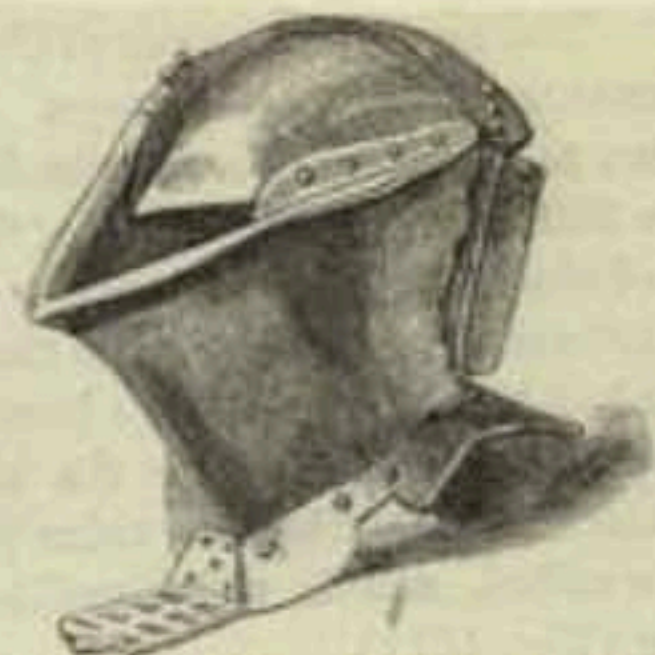


Sir Walter Raleigh

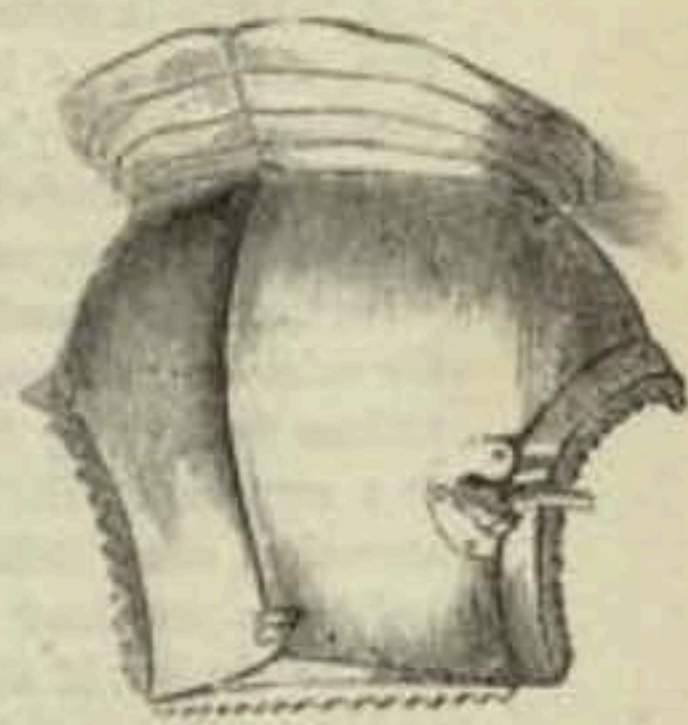
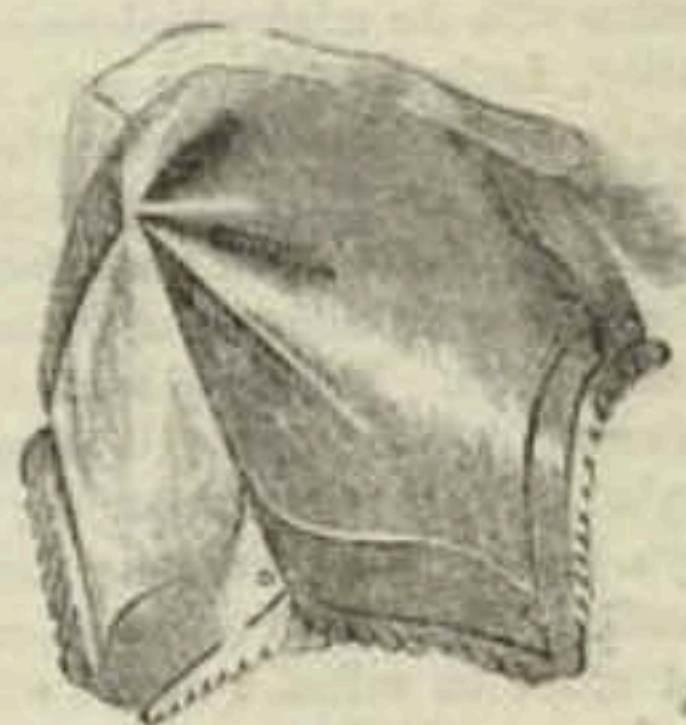
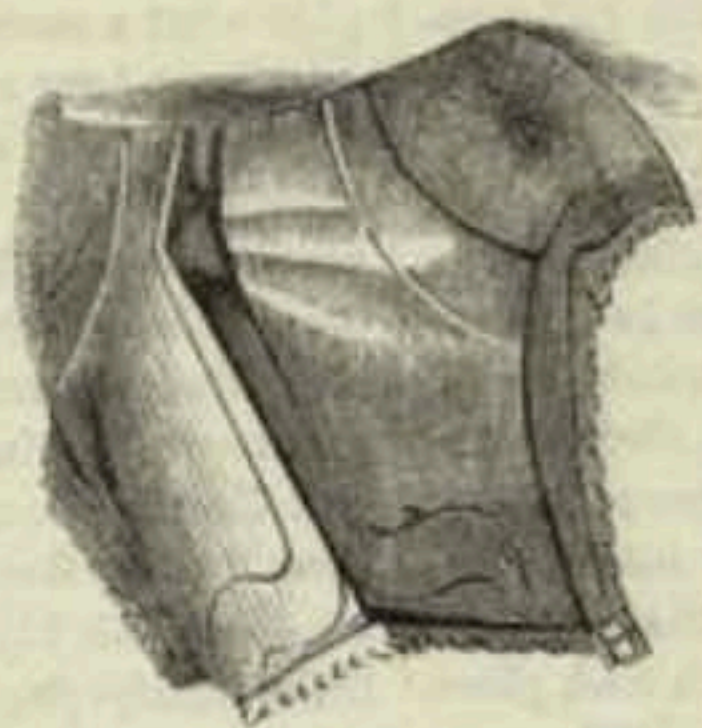
W. D. B. 1616



1641.—Suit of Puffed and Engraved Armour, 1510.



1637.—Tilting-Helmet of the time of Henry VII.



1642.—Breastplates of the time of Henry VIII.



1639.—General Costume in the time of Henry VIII. (Selected from Holbein's 'Dance of Death'.)



1640.—Military Costume in the time of Henry VIII. (Selected from Cotton MS. Augustus B.)



THE EARL AND COUNTESS OF SOMERSET.

reign, in an interlude entitled *The Four P's*, two of the P's being a pedlar and a pardoner, makes the latter ask why—

Women, after their uprising,
Bee so long in their appareling?

Costume - 1500s - English

N.Y. PUBLIC LIBRARY
PICTURE COLLECTION

9756



Engraved by W. B. D.

THOMAS HOWARD, DUKE OF NORFOLK.

Oil 1572.

FROM THE ORIGINAL, IN THE COLLECTION OF
HIS GRACE THE DUKE OF NORFOLK.

London, Published Jan. 1825, by Harding & Edward, Pall Mall East.

Costume - 1500s - English

LIBRARY
PICTURE COLLECTIONS



TRÁNSITO DE LA EDAD MEDIA A LA EDAD MODERNA.—TRAJES DE LOS INGLESES EN LA PRIMERA MITAD DEL SIGLO XVI

14, 57801894 v. 2

Costume - 1500s - English



Vornehme Frauen.

H. V. STALL 2545
PICTURE COLLECTION









H. Z. ...
P. ...



283

IF

16 (1860)
England, 16th Cen.

Costume - 1500₂ - English

N. Y. PUBLIC LIBRARY
PICTURE COLLECTION

Catherine Duchesse de Bar Sœur d'Henry IV.





COSTUMES OF BURGHER-WOMEN AND A COUNTRY-WOMAN.
In the time of the "Merry Wives of Windsor."

#48 MS. Add. 28330. NY PUBLIC LIBRARY

Costume-1500s-English

PICTURE COLLECTION



Dresses of the 16.th Century.

S. 237

Painting Lord Hastings'
Chapel Windsor



Earl of Southampton.

THE EARL OF SOUTHAMPTON 35
THE EARL OF SOUTHAMPTON



EDAD MODERNA.—TRAJES DE LOS INGLESES EN LA SEGUNDA MITAD DEL SIGLO XVI

#14,570(1994) v.2

Costume—1500s English



Engraved by J. G. Heath

EDWARD COURTENAY, EARL OF DEVONSHIRE.

OB. 1570.

HIS GRACE, THE DUKE OF BEDFORD.

Printed and Published by J. G. Heath

(1826? - 1856)

Costume - 1500s - English

T. 6

& R. 80

c/1835 - 1840.

Case X.



ELIZABETH. 1559.

Print 1559. Brit. Mus.
-1596

Costume - 1559 - English



ELIZABETH, 1580.

Lady Bacon. - by Sir N. Bacon.

Mary Stuart, Mytens, Windsor Castle Elizabeth, Zuechero.

12416

Costume - 1580 - English



Migliavacca inc.

Abito dei Cittadini ec.

11,077
Drawn in early 1800s

Costume - 1500 - French



Fonte del

Galina, sculp.

ANNE DE BRETAGNE,

Née en 1476, Morte en 1514.

D'après une miniature sur vélin du Cabinet de Paris.

Anna of Brittany (1476 or 1477 - 1514)

France

243



F

16 (1860)
France, 16th Cen.

Costume - 1500s - French

N. Y. PUBLIC LIBRARY
PICTURE COLLECTION

XVII^e SIÈCLE.

Règne de Henri III.



Bedeau.

8488

Costume - 1500s - French

NY. HISTORICAL LIBRARY
PICTURE COLLECTION



Leclerc del.

Galvan sculp.

LA BELLE PAULE,

à la Cour de France en 1568.



BOURGEOISE DE PARIS AU XVI^e SIÈCLE.
* 0,731 (1532-54)
F. Bouché, B. P. C.

Costume - 1500's - French



Front. del.

Galvan sculp.

LA BELLE PAULE,

née à Coulances en 1618.



BOURGEOISE DE PARIS AU XVI^e SIÈCLE.
*1571 (1622-24)
FRANCE, 16^e C.

Costume - 1500's - France



XVI^e SIÈCLE.

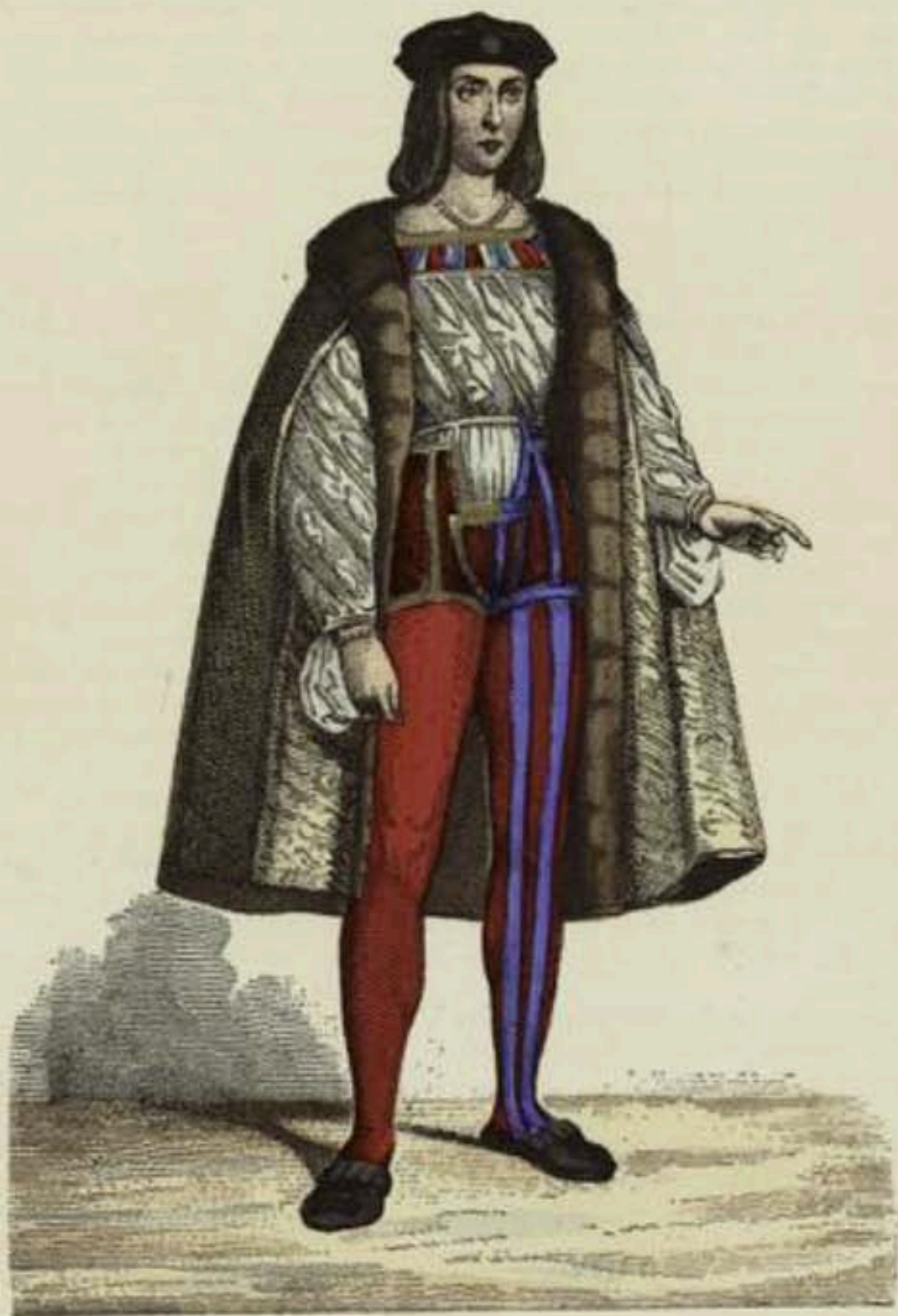
Regne de Henri IV.



CATHERINE DE BOURBON

Duchesse de Bar.

Costume - 1500s - French



CHARLES D'AMBOISE, SEIGNEUR DE CHAUMONT.

(Mort le 11 février 1511, page de Louis XII.)

#11,330(1883)

XVI^e SIÈCLE.

Règne de Louis XII.

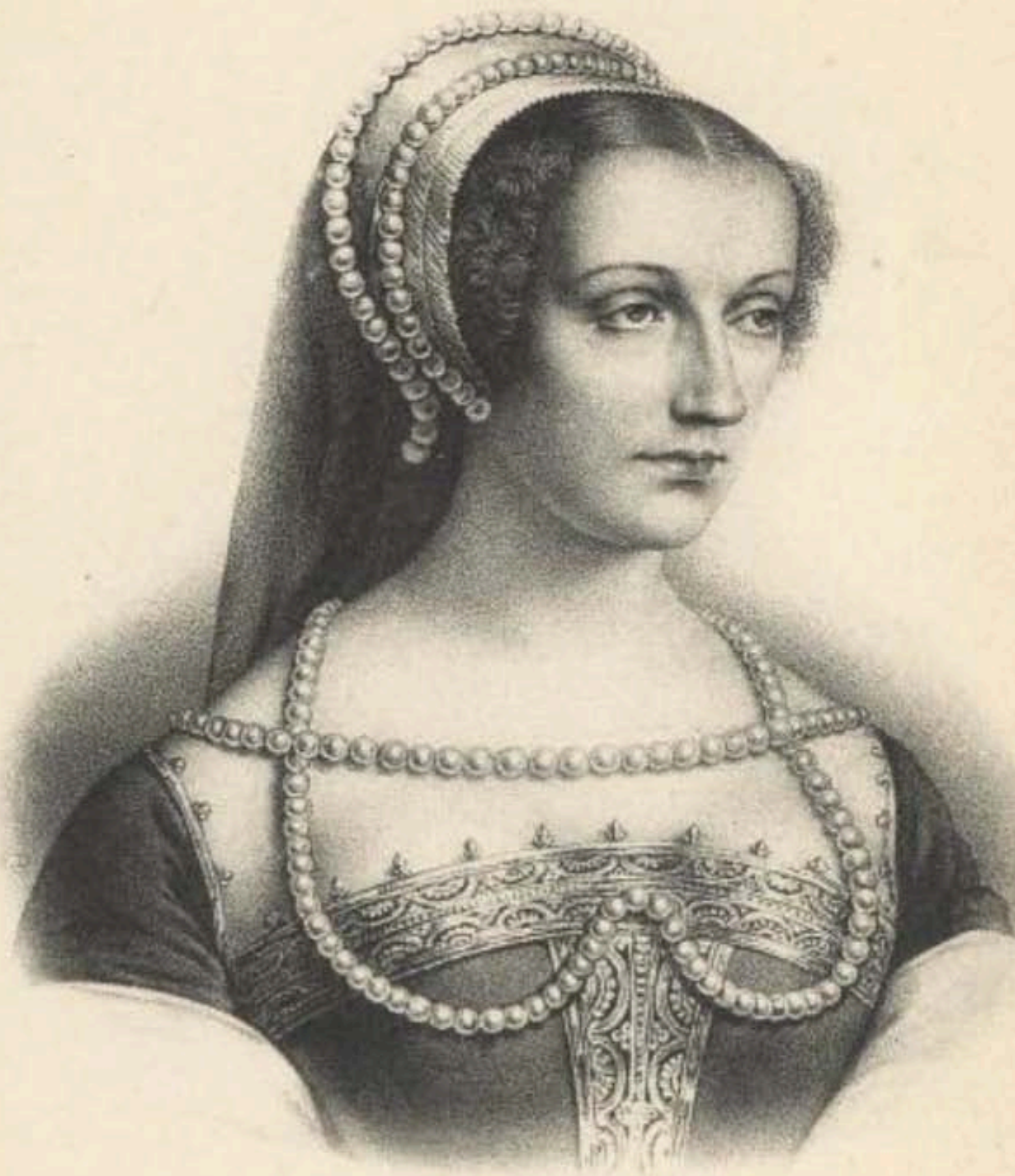
117



CHARLES DE CLEVES; Comte de Rethel.

Costume - 1500s - French.

N. Y. PUBLIC LIBRARY
PICTURE COLLECTION



CLAUDE DE FRANCE

*Née en 1499, à Romorantin. Fille de Louis XII Roi de France et d'Anne de Bretagne.
Elle épousa en 1514 le Dauphin François de Valois (depuis François I^{er}),
et lui apporta en dot le Duché de Bretagne, les Comtés de Blois, de Coucy,
de Montfort, etc. Boiteuse mais spirituelle et pleine de bonté,
elle reçut le surnom de « Bonne Reine ».
Elle mourut en 1524.*



CLAUDE DE LOBBRAINE, 1^{er} DUC DE GUISE.

(Né en 1496, mort en 1524.)

* N. 1524 (1522-24)
FRANCE 16^{me} C.

Costume - 1500's - France



#10,425

Costume - 1500, - French

H. Y. PUBLIC LIBRARY
PICTURE COLLECTION



Dessiné par Boutevillier

Gravé par Galle



Engraved by J. W. Smith.

COMTE DE BRIENNE.

Grand Master of the Ceremonies to Francis the 1st &c.

From an original Painting in the Collection of
the late Quintin Crauford Esq.

London Published 1797 by Mrs. Major John Crauford

Costume - 1500s - French



Corte di Francesco I.

11,077

The Court of Francis I.
from a 16th c. miniature,
Copied in early 1800s

Costume - 1500s - French

N. Y. PUBLIC LIBRARY
PICTURE COLLECTION



Corte di Francesco I.

Costume - 1500s - French

11,077
Court of Francis I, from 16th c. miniature
Copied in early 1800s
N.Y. PUBLIC LIBRARY
PICTURE COLLECTION

Charles IX. l'An 1560

Montf.



Antoine de Bourbon
Roi de Navarre

id
4



François de Lorraine
Duc de Guise

id
5



id.
7



id
3



id.
6



id.
2



Henri d'Angouleme
Grand Prieur de France
Batar d
d'Henri II

id.
8.



Costume des Gentils Hommes
de la Cour de Charles IX.

#10,455

Costume - 1500s - French

N. Y. PUBLIC LIBRARY
PICTURE COLLECTION



Fig. 432. — Costumes d'une riche bourgeoise normande et d'un seigneur ou notable en grand habit de cérémonie du temps de François I^{er}. D'après le recueil de Gaignières tirés des vitraux de l'église Saint-Ouen, à Rouen. (Bibl. nat. de Paris.)

14716 (1875) Rich Norman bourgeois and nob - in ceremonial garb

FRANCE XVI^e SIÈCLE.



Musée, lib.

157. Hanford Musée Paris

COSTUMES DIVERS.

#12,522 (1P52)
16th C. France

Costume - 1500s - French



Fig. 433 et 434. — Costumes des dames et demoiselles de la cour de Catherine de Médicis.
D'après Cesare Vecellio.

Costume - 1500s - French

#11,716 (1875)

N. Y. PUBLIC LIBRARY
PICTURE COLLECTION



COUR DE HENRI II

N.Y. PUBLIC LIBRARY
PICTURE COLLECTION



Le Roy

A. P. Lottin

COUR DE LOUIS XII

2. PUBLIC LIBRARY
MICHIGAN COLLEGE

Source: *lud*

Costume - 1500s - French

Guillemette de Narbonne femme de Robert de la Marck.



Mignon d'Henry III.



Courtois qui vont au Louvre.



Courtois avec sa Damoselle.



no 47 50
Courtiers of France of Henry III, etc.



DAME DE LA COUR DE FRANÇOIS I^{er} (XVI^e SIÈCLE).

4,330 (1883)

Lady of the Court of Francis Ist

France, 16th c.

N^o 46.

F. Roy, éditeur.

A. Y. BUREAU LIBRAIRIE
PICTORIAL COLLECTION

Costume - 1500s - French

1
Guillemette de Carroubichy femme de Robert de la Mare.



2
Mignon d'Henry III.



3
Courtisane qui vient au Louvre.



4
Courtisan avec sa Demoiselle.



no 87 40
Courtisane of some of Henry III. 1584



DAME DE LA COUR DE FRANÇOIS I^{er} (XVI^e SIÈCLE).

*4,330 (1883)
Lady of the Court of Francis Ist
France, 16th c.

N^o 46.

F. Roy, éditeur.

A. F. SMITH LIBRARY
METROPOLITAN MUSEUM OF ART

Costume - 1500s - French



4703

DAME DU TEMPS DE CHARLES IX.

Costume - 1500s - French



Fig. 279. — Dame en coiffure bouffante, vers 1560

10,402

NY PUBLIC LIBRARY
PICTURE COLLECTION

Costume - 1500s - French



DAMES ET GENTILSHOMMES D'ENVIRON 1584.

(D'après un tableau de Clouet, dit Janet, au musée du Louvre.)



Diane de Poitiers (3)

Period 1499-1566

©E. Félix 1899

Costume-1500s-French

Henry reeled from | of the duke, namely, the Admiral de Coligny
the
rue
non-
lay
ven
the

the
tion
hy.
him
to
with-
em-
ited
the
Not
fairs
ises,
and
fairs
late
arty
wer-
con-
was
phin
age
ance
e or
hore
hird
rom-
iony
cent
rt of
be-
the
riage
ghter



THE DUKE OF GUISE.

(1555) 1670

... I. held the title | and the Count d'Andelôt, joined the Protestant.



EDAD MODERNA.—2. TRAJES DE LOS FRANCESES EN LA SEGUNDA MITAD DEL SIGLO XVI

#141570 C1894) VOL 2

Costume - 1500s - French



EDAD MODERNA.—1. TRAJES DE LOS FRANCESES EN LA SEGUNDA MITAD DEL SIGLO XVI

#14,570 (1996) vol 2

Costume - 1500s - French

Eleonor d'Autriche.

T 1558

1



FRANCE - FRANCOIS I.



Elisabetta di Francia, Giovanna d'Albert Se.

11,077
Drawn in 1805

Costume - 1560s - French

U.S. NATIONAL ARCHIVES
PICTorial COLLECTION



Verrin inv.

Henrico II. Caterina de' Medici &c.

Costume - 1550s - French

14671
from contemporary paintings
copied in early 1800s

N. Y. PUBLIC LIBRARY
PICTURE COLLECTION



Compte Labe des

Musee de Valenciennes sur le P. de Valenciennes (1600-1610)

Epoque de Charles IX. (1550-70)

COSTUME - 1500s - French

N. Y. PUBLIC LIBRARY
ASTOR LENOX TILDEN FOUNDATION
CULTURE COLLECTION

View Page 58



FEMME DE BAYONNE (XVI^e SIÈCLE)

(D'après une estampe de la Bibliothèque nationale.)

* 1,331 (1882-84)

Woman of Bayonne
France, 16th c.

Costume - 1500s - French

FRANCE — XVII^e SIÈCLE



Publ. par M. Aug. Kervin, Lich.

Armand Carasso gravé.

Imp. Huguette Morel.

FRAGMENT D'UN VITRAIL DE L'ÉGLISE DE S^t CODARD (ROUEN)

40,000 (1858)
1611 C. FRANCE

Costume - 1670s - French



FRANCE XVI^E SIECLE

FRANCE XVITH CENTY

FRANKREICH XVI^{TES} JAHR?

FV

IMP. FROMM GIBT. IN ST. PAULS

Fig. 100

Spring 1844

Costume - 1500s - French

N. Y. PUBLIC LIBRARY
ASTOR LENOX TILDEN FOUNDATION



Fing 104

501 Imp. French. Paris. Paris
M. V. HAZEN. PARIS
PICTURE COLLECTION

FV

France- 16th century. Paris during confederacy

1. Militia. Hood, large pouches, sword carried on side.
2. Wine vendor.
3. Water carrier.
5. Superior of Chartres, in white woolen robe of his order.
6. Rector of Paris, armed with halberd.
7. Military officer. Captain- cutlas, shoulder plates, armour, gauntlets.
8. Small page carrying captain's shield.
- 9, 10. Lower class woman dressed in cotton, with her child.
- 11, 12. Bourgeois mother and child. Wide shirt, large sleeves, tight blouse. Child dressed same way.
13. Small runner carrying messages and orders.
14. Militia. Soldier loading rifle.
- 15-20. Bourgeois family. Man in cloth costume with large hat. Women's dresses: full sleeves, tight blouse, masks of black satin. Small girl's costume similar.



Francesco Delfino Duca di Bretagna &c.

11,077
Drawn in 1689 by 16005

H. V. ...
PICTURE CLASSICA

Costume - 1500s - French



Francesco di Lorena Duca di Guisa &c.

Ciarré e Stanghi inc.



Francesco I. Eleonora di Austria &c.

Vernis inc.

11,077
Drawn in early 1800s

Costume - 1500s - French



FRANCIS I. — Page 115.
(1494-1547)

France - Francis I



FRANCIS II. (AGED SIXTEEN).
(1543-1560)

France

Costume - 1500s - French



Italienische Oberhemd und Kap.

1500 (1617)
FRANZ. 1570-1630

Deutsche Magistrateppeln und Ritter.



282. Französische Edelfrau. Um 1570. (Nach Hans Weigelt)

Costum - 1500s - French 313

N. Y. PUBLIC LIBRARY
PICTURE COLLECTION



COSTUME 1500's - French

Französische Edelleute.

1570-1599 2245

N. Y. PUBLIC LIBRARY
PICTURE COLLECTION



N. Y. PUBLIC LIBRARY
PICTURE COLLECTION

231. Französische Tracht unter Heinrich III., um 1580. (Gemälde in Rennes.)

Costume - 1500s - French

#313
313



Remond, del.

Gruber, sculp.

FRANÇOIS DE FRANCE.

Duc d'Alençon, d'Anjou et de Brabant.

(1554 - 1584)

Son of Henry II of France
Duke of Anjou since 1574.

France



FRANÇOIS DE LORRAINE, DUC DE GUISE.

(Mort en 1563.)
*15, 531 (1563-64)
FRANCOIS, 15005.

XVI^e SIÈCLE.

Règne de François II.



1568

Dep. Girard

FRANÇOIS II, ROI DE FRANCE.

Costume - 1500s - French

MAISON MUSEE
MUSEE NATIONAL



FRANÇOISE DE FOIX,

Comtesse de Chateaubriant,

(1475-1537)

T. 4.

Costume - 1500s - French

N. S. PUBLIC LIBRARY
EMERSON COLLECTION

Henri II. l'An 1547.

Montf.
1



Marguerite de France
Fille de François I.

5



Elisabeth fille d'Henri II.
Reine d'Espagne

id
8



Elisabeth fille d'Henri II.

id
6.



Claude de France Duchesse
de Lorraine

id
7



Marguerite de France
avant son mariage

Montf.
3. A.



Diane de France
Duchesse d'Angoulême

3. B
id.



Catherine de Medicis
Epouse d'Henry II.

Moscroy

Medaille



10,485

Costume - 1500s - French

N. Y. PUBLIC LIBRARY
PICTURE COLLECTION

le Chancelier de
l'Hopital

Montf.
2



le même dans
mon Cabinet

3



Christophe de Thou

Dubreul
1



Louis Duc de Nevers

Montf.
6.



Henri III. 1574

Montf.
4



le même

id
5



10, 485

N. Y. PUBLIC LIBRARY
ASTOR LENOX TILDEN COLLECTION

Costume - 1500s - French

*François Dauphin file
d'Henri II.*



*François II. L'An 1559.
Montf.*



le même



*Charles de Cosse Marechal
de France*



*François II.
5*



*Blaize de Montluc
Marechal de France*



251



Fig. 16 (1860)
Burgundy, 16th cen.

Costume - 1500s - French

N. Y. PUBLIC LIBRARY
PICTURE COLLECTION



A. Bianchini inv.

E. Meyples del.

Costume - 1560s - French



H. Y. PUBLIC LIBRARY
PICTURE COLLECTION

251



* 16 (1860)
French nobleman

Costume - 1500s - French

PL. 1. PUBLIC LIBRARY
PICTURE COLLECTION



110 APT Feb 15, 1890
François, 1500s
Leon St. Pierre, Munich, Bavaria



332.—French, reign of Francis I.

#12,499

Costume - 1500s - French

N. Y. PUBLIC LIBRARY,

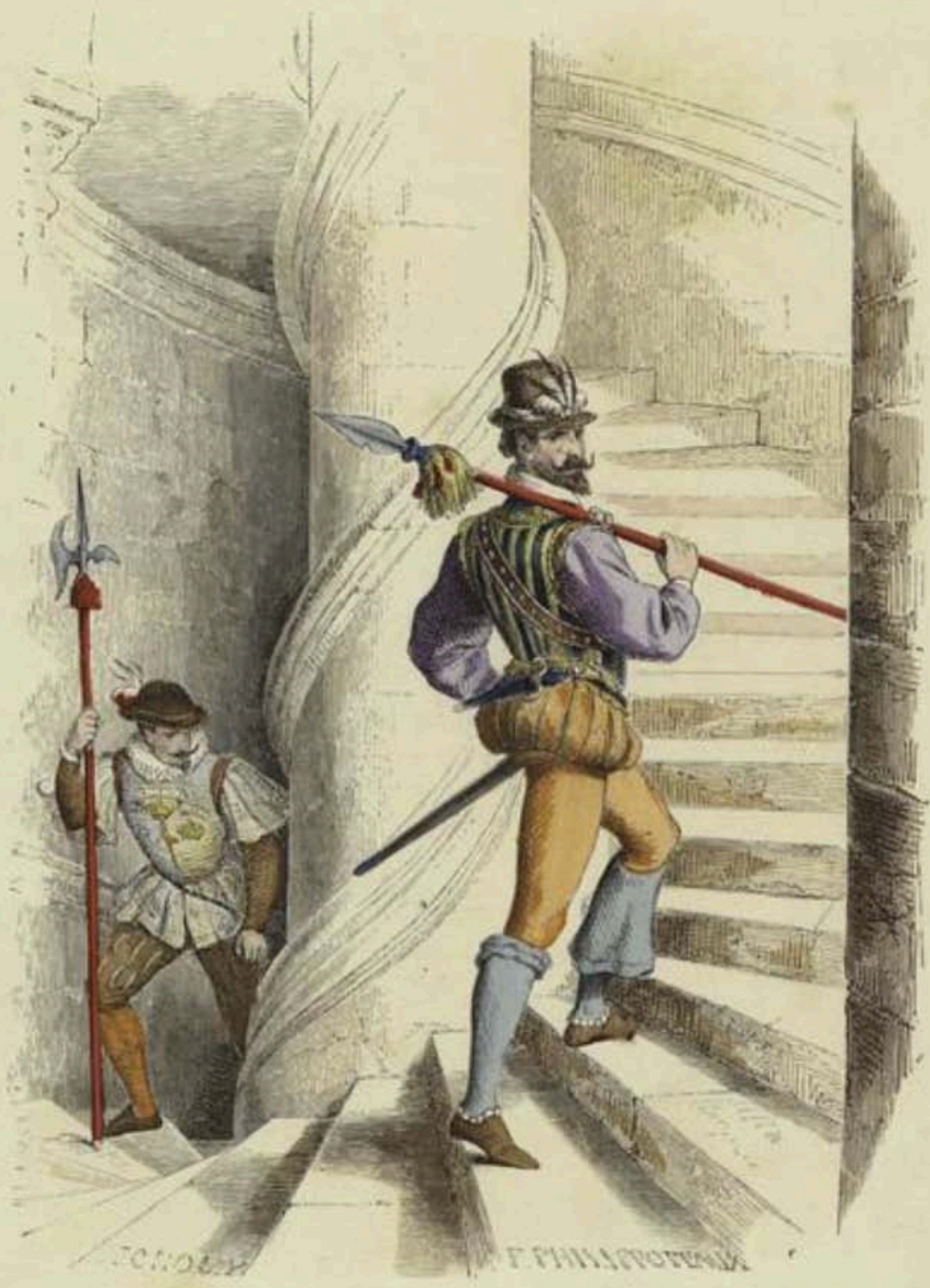
PICTURE COLLECTION



GARDE DU CORPS DE FRANÇOIS I^{er} (XVI^e SIÈCLE).

(D'après une miniature du temps, par Gaignières.)

11,330 (1887) vol 3



GARDE DU CORPS DE LA PRÉVOTÉ

Officier des gardes (1574 à 1589).

15730 (1573)

Guarda' officius

A.

F. Roy, éditeur.

Costume - 1570s - French

H. V. PUBLIC LIBRARY
 HISTORICAL COLLECTION



GENTILHOMME DE LA COUR DE FRANÇOIS I^{er}.

(15¹⁶ siècle.)

N^o 11, 331 (1522-24)

France

16¹⁶

Costume - 1500's - France

GENTILS HOMMES DE LA COUR DE CHARLES IX.

1617.25. tome II. page 118.



J. P. N.

Costumes 1500's - France

1550 Gentlemen of the Court of Charles IX



LECHEVIGNARD del.

GENTILSHOMMES DE L'AN 1572.

(D'après le recueil de Gaignières, au cabinet des estampes de la Bibliothèque impériale.)

11,330 (1884) VOL 3



GODEFROI DE BARRI
Seigneur de Renaudie.

1460

Renaudie

XVI^e SIÈCLE

Règne de Louis XII.



GROUPE *extrait d'une Gravure de 1600.*

8498

Costume - 1500 - French

N.Y. PUBLIC LIBRARY
PICTURE COLLECTION



Guarri, o Stanghi, etc.

Guardia del Corpo, Soldati Sc.

Costume - 1500s - French

11,077
Drawn in early 1800s

N. Y. HISTORICAL SOCIETY
PICTURE COLLECTION

XVI^e SIÈCLE.

Règne de François I^{er}

133



1548

GUILLAUME BUDEE.

Costume - 1500s - French



Design par de Selve

Gravé par Allou

HELVETI DE GUERRE.

(1550-58)

Costume - 1500s - French

ROYAL LIBRARY
MUSEUM COLLECTION

111



HENRI DE LORRAINE, DUC DE GUISE, DIT LE BALAFRÉ.

(Assassiné le 23 décembre 1588.)

* 0321 (1882-24)
FRANCE, 16^e S.

Costume - 1500's - French



HENRI II

Costume - 1500s - French
Roi de France.



13.

Costume - 1500s - French

HENRI II

1619-54
N.Y. PUB. PICTURE



HENRI III (1574 A 1589.)

(D'après un tableau inconnu; dessin de Chevignard.)

* 2331 (1872-84)
FRANCK,



Costume - 1500s - French

10. Henri III 1551-89

1221-64
MORTIMER COLLECTION
HARVARD-YENCHING INSTITUTE



HENRY III,
ROI DE FRANCE.
1580-89.
TABLEAU INEDIT
D'ECOLE FRANCAISE,
AU MUSEE DU LOUVRE.

Jacquens

D'Am A. Bachelin

X-0 Costume - 1500s - France

Jacquens

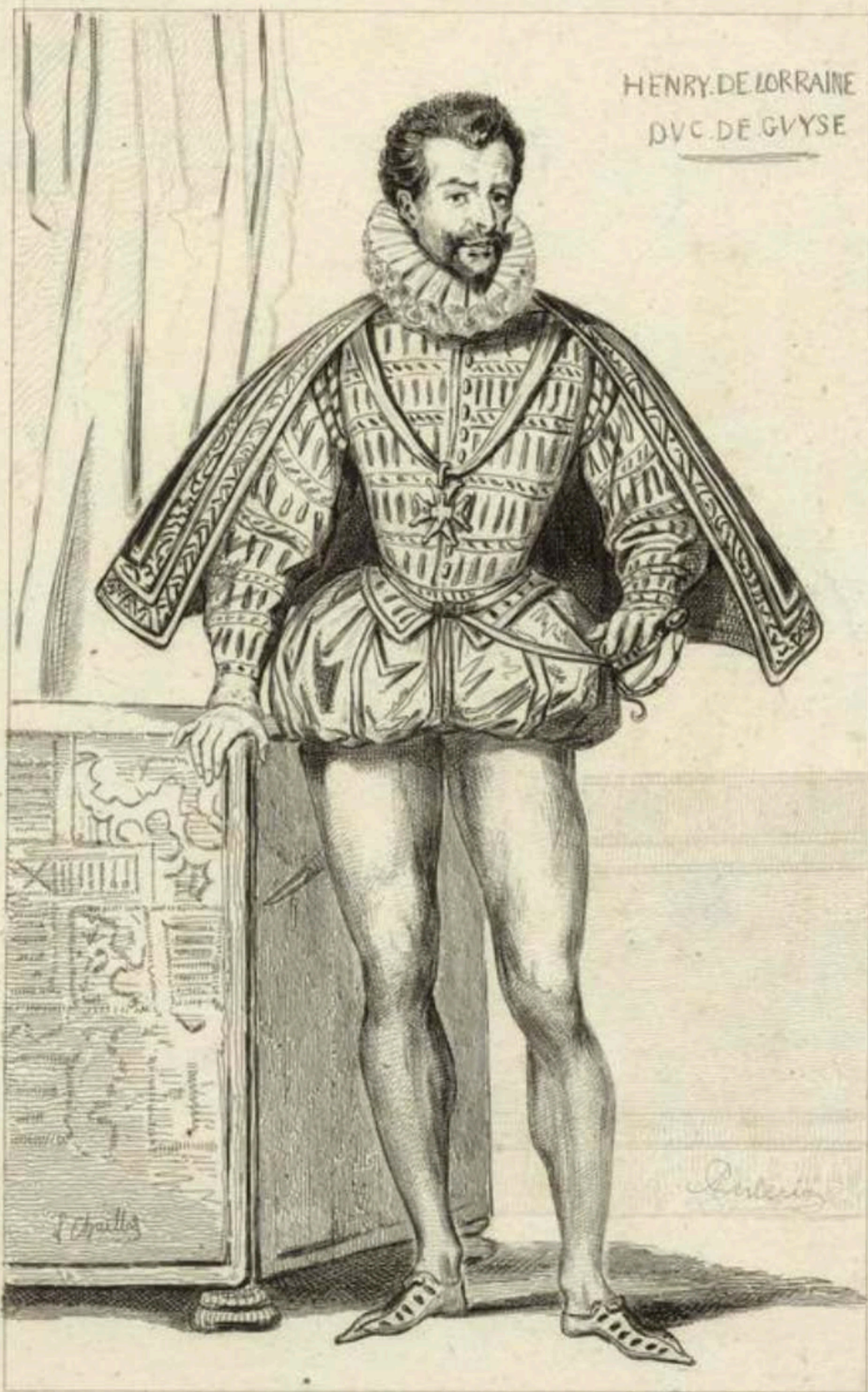


HENRI DE GUISE.

(1550-88)

Costume - 1500s - French

HENRY DE LORRAINE
DUC DE GUISE



Goussier

J. Chailly

GUISE



HUBERT LANGUET



516

XVI^E SIÈCLE

Jacques Duc de Nemours.



(88-1851)



Jean Desmarets presente un Livre à la Reine Anne

Montf.

Gaston de Foix

Gal. des H. Ill.



le meme La Trimouille

Montf.



Louis de la Trimouille

Gal. des H. Ill.



E. Y. Pine.

Et. Le. card. v. ruf.

JEANNE D'ALBRET.

Reine de Navarre,

Morte à Paris, le 8 juin 1572. Agée de 44 ans.

Costume - 1500. French

1555
N. Y. PUBLIC LIBRARY
PICTURE COLLECTION



Karl IX. v. Frankreich.
1550—1574.

Eleonora v. Oesterreich,
Gemahlin Karls IX. 1554—1592.





Imp. J. Rigo Lebrun et C^{ie}

551

LACRESSONNIÈRE, rôle de LA MÔLE, dans LA REINE MARGOT.

Paris — maison. Marlinel. Hauteceur freres, rue du Coq. 13.

210



16 (1860)
Lady of Arignon
Costume - 1500_s - French

N. Y. PUBLIC LIBRARY
PICTURE COLLECTION

XVI^e SIÈCLE .

Règne de Henri III.

31



François Del.

Gravé J.C.

1645

LOUIS DE GONZAGUE.

Prince de Mantoue, Duc de Nevers.

Costume - 1600's - French

H. V. PUBLIC LIBRARY
PICTURE COLLECTION

Louise de Lorraine Epouse de Henri III.
Montf.



F 10,485

Costume - 1500 - French

N. Y. PUBLIC LIBRARY
PICTURE COLLECTION



LOUIS XII FAISANT SON ENTRÉE A GÈNES.

(COMMENCEMENT DU XVI^e SIÈCLE.)

Miniature manuscrite de la Bibliothèque nationale (1315).

10,330 (1883)
Louis XII entrant à Gènes
Enluy 16^e C.

n° 35

Costume - 1500s - French

F. Coy, éditeur.

N. Y. PUBLIC LIBRARY
PICTURE COLLECTION



Louise de Lorraine
Princesse de France

Costume - 1500s - French

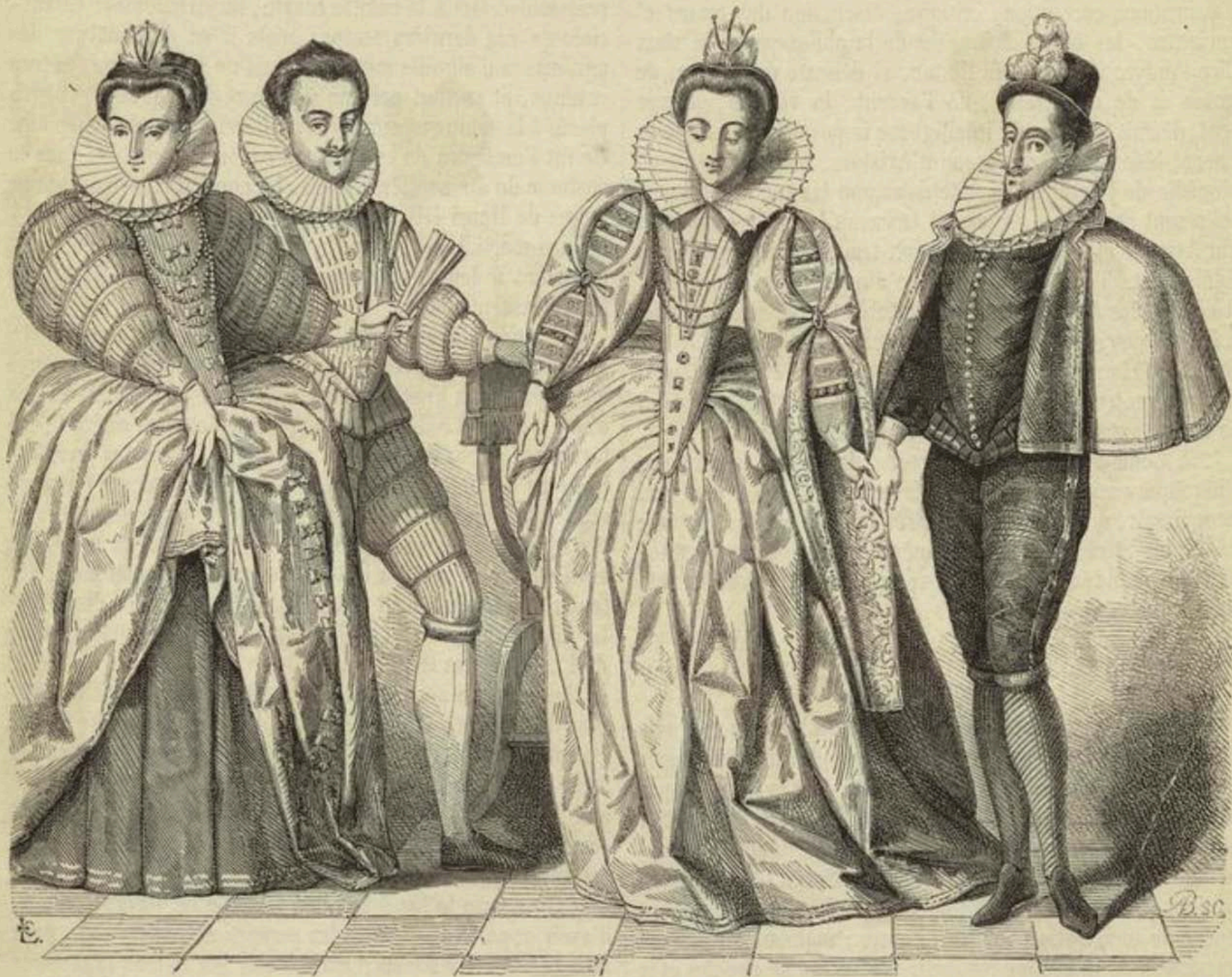


118

LOUISE DE SAVOIE

Née en 1476. Fille de Philippe, Duc de Savoie et de Marguerite de Bourbon. Elle épousa, en 1488, Charles d'Orléans, Comte d'Angoulême et eut un Fils qui devint François I^{er} et resta veuve à dix-huit ans.

Régente pendant l'expédition du Milanais, elle souilla de ses vices son administration et fit condamner à mort l'Intendant Semblançay qu'elle accusait de ses propres détournements. Le connétable de Bourbon ayant refusé son amour, elle le fit dépouiller de ses biens et le força à quitter la France. Pendant la captivité de son Fils (1525), elle montra, toutefois, plus de sagesse et conclut en 1529, à Cambrai, avec Marguerite d'Autriche, le traité des Dames. Elle mourut en 1531.



Louise de Vaudemont, femme de Henri III; le duc de Guise; Marguerite de Vaudemont et Anne de Joyeuse (1581); — D'après le tableau des Noces de Joyeuse, au Musée du Louvre. — Dessin de Chevignard.

Costume 1580 - France

PT 1805

PICTURE COLLECTION



LOUISE DE VAUDEMONT, FEMME DE HENRI III. — LE DUC DE GUISE. —
MARGUERITE DE VAUDEMONT ET ANNE DE JOYEUSE (1581).

(D'après la tableau des noces de Joyeuse au musée du Louvre. — Dessin de Chevignard.)

11,330 (1883)



Luigi XII, Anna di Bretagna &c.

Costume - 1510s - French

11,077
 Louis XII 1462-1515, etc.
 from tomb sculptures. Drawn early 1800s
 H. V. P. ...
 PICTURE COLLECTION



MADemoiselle DE LIMEUIL,
FILLE D'HONNEUR DE LA REINE CATHERINE DE MEDICIS.

Costume - 1500s - France

N. Y. HISTORICAL SOCIETY
FICTITIOUS COLLECTION



8296

Costume - 1500s - French

N.Y. PUBLIC LIBRARY
ASTOR LENOX TILDEN COLLECTION



XVII^e Siècle

#5216

N. Y. PUBLIC LIBRARY
PICTURE COLLECTION

Costume - 1500s - French



D. G. C. 1562

BRITISH MUSEUM LIBRARY

252



16 (1860)
France, 16th cen.

Costume - 1500s - French

N. Y. PUBLIC LIBRARY
PICTURE COLLECTION



Dessiné par Quentin Metsu.

Gravé par Goussier.

Maonsia (Madeline).

avait en 1574.

Dessiné par L. Massard.

Dessiné et Gravé par Gavard.

Costume - 1500s - French

*M. S. P. 10000
MUSEUM OF THE
METROPOLITAN MUSEUM OF ART*



MARCHAND FRANÇAIS AU XVI^e SIÈCLE.

11,330 (1884) vol 3



Margherita di Lorena &c.

Costume - 1590s - French

11,077
Drawn in early 1805

H. Y. FORD LIBRARY
PICTURE COLLECTION



MARGUERITE OF LORRAINE:—1590.

64



MARIE LE JARS DE GOURNAI

Marie Stuart Epouse de Francois II.



*10,485

Royalty - Scotland - Mary, Queen of Scots

Jean Granchet Valet de
Chambre du Roi.



Magdelaine de Corbie
Epouse de J. Granchet



Costume - 1500₂ - French *10,485



MARIE STUART.

(D'après une miniature du recueil de Gauguier, au cabinet des estampes de la Bibliothèque impériale.) (1550 à 1560.)

*11,736 (1865)
Marie Stuart, 1542-1587 -
in France*

✓

N° 21.

Costume - 1550s - French

F. Roy, éditeur.

H. Y. PUBLIC LIBRARY
FICTIVE COLLECTION



Dessiné de Bonnys

H. V. POISSON DEL.
PICTURE COLLEGE

*Martin Ruzé Seigneur de Brouillon de Longueville
Intendant des Mines et Monnaies de France 1625*

Martin

Biographe et Portographe de France



1. A Guard, under Charles IX. and Henry III. 2. Swiss Guard. 3. Soldier. 4. 5. Court Costumes. 6. Louisa of Lorraine, Consort of Henry III. 7. Chancellor. 8. President of Parliament. 9. Doctor of Medicine. 10. Margerith of Lorraine. 11. Henry III. † 1589. 12. 13. Court Costumes in the time of Henry IV. at the end of the Century. 14. Henry IV. about 1600.



Henri II
Charles IX

Henri III
Henri IV



Racinet
#301

PROPRIÉTÉ DE LA BIBLIOTHÈQUE

Yves d'Almeida de Camille

1564



Paris par Louis XIV

*Montluc (Blaise de) Montaigne, Baron de Montaigne, Seigneur de
et de 1571, Maréchal de France 1577
Baron de Montaigne*

Paris par Louis XIV

1561-1577

Costume - 1500s - French



After the original

*Montmorency, Pierre, duc de
1570-1571, Councillor of France 1577*

Ed. Leung

Biographical Dictionary

1570-1571

NA

Costume - 1500s - French

*Morceau Extrait d'une Gravure faite
en l'An 1500*





N. Y. PUBLIC LIBRARY
PICTURE COLLECTION



*16 (1860)
Noble woman of Orleans
16th cen.

Costume - 1500_s - French

N. Y. PUBLIC LIBRARY
PICTURE COLLECTION



R
Lacour

Odet CARDINAL de COLIGNY

FRANÇOIS de COLIGNY

GRAVURE de 1579 (M. DUVAL FEUT - COLLECTION HENNIN)

#16,291 5157-711 Fl.

XVI^e SIÈCLE .

Règne de Louis XII.



ODET DE FOIX.

8488

Costume - 1500s - French

N.Y. PUBLIC LIBRARY
PICTURE COLLECTION

FRANCE — Fin du XVII^e SIÈCLE



F. Dore et A. Bascot del. et lit.

Ingr. par Margot Maup. à Paris.

1 et 2. PAYSANNES — 3. CHAMBRIÈRE DE SAUMUR.

Voies les Recueil des de Gaspoires, 2^{me} Part. à la B.M. de Rouen, (Bonds Labor).

* 12, 522 (1862) end 1500s France

Costume - 1500s - French



Portrait de la reine Claude, première femme de François I^{er}. —
D'après les Antiquités de la monarchie française, de Mont-
faucon.



Archer de la garde du roi en costume de chambre.

PIT

N. Y. PUBLIC LIBRARY
ASTOR LENOX TILDEN COLLECTION



PORTRAITS EN PIED D'ANTOINE DE SAINT-CHAMAND, SEIGNEUR DE MÉRY, D'UNE DAME INCONNUE
ET DE HENRI IV AVANT 1600.

(D'après le *Recueil de Gaignières.*)

11,330 (1884) vol 3



Presidente del Parlamento &c.

11,077
1, 2, 3, 4 Members of Parliament, 5 Master of Accounts,
6 Head of Paris merchants. DRAWN IN EARLY 1810S

Costume - 1590s - French

REV. PICTURES

FRANCE, fin du XVI^e SIECLE.



F. Sire et A. Encart del. et lit.

Imp. par Blanchard Meunier, Paris

PÊCHEURS ET MARINIERS.

Extraits d'un Vitrail, à l'Eglise de Font-de-l'Arche.

N. O. 522 (1858) end 16th C. France

Costume - 1500s - French



Santi del.

Santi sculp.

RENÉE DE RIEUX-CHÂTEAUNEUF.

Née en 1550.

(1550-97)

D'après une Miniature du Cabinet de l'Éditeur.



Migliavacca inc.

Abito dei Cittadini ec.

11,677
DRAWN IN EARLY 1800S

Costume - 1500 - French

N. Y. PUBLIC LIBRARY
PICTURE COLLECTION



Fanti del.

Galini sculp.

ANNE DE BRETAGNE,

Née en 1476. Morte en 1514.

D'après une miniature sur velin du Cabinet de Paris.

Anne of Brittany (1476 or 1477 - 1514)

France

243



#16 (1860)
France, 16th cen.

Costume - 1500s - French

N. Y. PUBLIC LIBRARY
PICTURE COLLECTION

XVII^e SIÈCLE.

Règne de Henri III.



Bedeau.

8488

Costume - 1500s - French

NY. PUBLIC LIBRARY
PICTURE COLLECTION



Gravé del.

Gravé sculp.

LA BELLE PAULE,

à la Cour de Louis XV en 1768.

COSTUMES CIVILS ET MILITAIRES DES FRANÇAIS A TRAVERS LES SIÈCLES



BOURGEOISE DE PARIS AU XVI^e SIÈCLE.

*11781 (1582-84)
FRANCE, M^{usée} L.

Costume - 1500's - French